



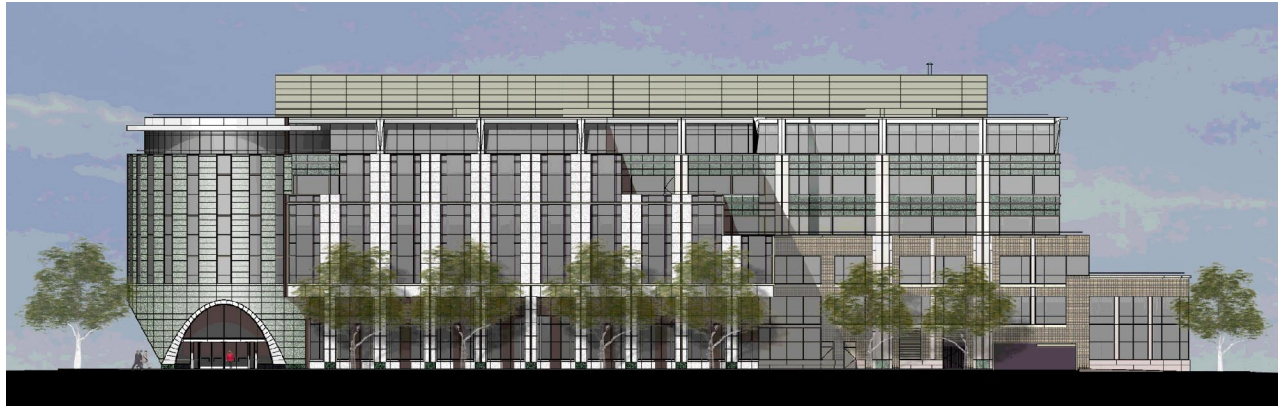
Taylor Engineering

LLC

1305 Marina Village Parkway, Suite 101 ■ Alameda, CA 94501-1028 ■ (510) 749-9135 ■ Fax: (510) 749-9136

Capitol Area East End Complex – Block 225

Sacramento, CA



Owner:	State of California, State Department of Education
Completion Date:	August 2002
Size:	330,000 ft ² office; 150,000 ft ² underground garage; 6 stories
Architects:	Johnson Fain Partners Fentress Bradburn Architects Dreyfuss & Blackford Architects Simon Martin-Vegue Winkelstein Moris
General Contractor:	Hensel Phelps Construction Company
Mechanical Contractor:	Critchfield Mechanical Inc.
HVAC System Description:	Built-up underfloor air distribution with perimeter underfloor variable speed heating fan-coils, 975 ton chilled water plant including variable speed chillers and a unique primary/distributed secondary pumping system. Building is expected to achieve a Gold LEED rating.
Taylor Engineering's Role:	Conceptual design of underfloor HVAC system, energy optimization and analysis, full design of control systems, indoor air quality consulting, LEED documentation, and complete control system commissioning and functional testing.
References:	California DGS: Jim Ogden (jim.ogden@dgs.ca.gov) Hensel Phelps: Seth Boles (sboles@henselphelps.com) Fentress Bradburn: Greg Gidez (gidez@fentressbradburn.com) SMWM: Anthony Bernheim (bernheim@smwm.com) Critchfield Mechanical: Mark Vranicar (markv@cmihvac.com)